

1ST UNIT & OFFICE - 237P/1A, SATIN SEN SARANI
BAGMARI KOLKATA - 700054.



2ND UNIT -GANEX COMPLEX, MULLICBAGAN,AMTA
RANIHATI ROAD HOWRAH -711322.



+91 9051763430. RAHUL SHARMA.

+91 9330127083. RAJA SHARMA.

+91 6290583038. ROSHAN SHARMA



info@vaishalipoles.com /Website/www.vaishalipoles.com



VAISHALI POLES

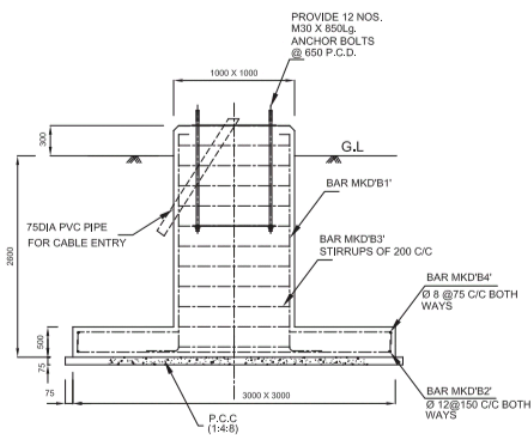
VAISHALI POLES
MANUFACTURER OF LAMP POLES, SELLERS & GENERAL ORDER SUPPLIERS

VAISHALI POLES
MANUFACTURER OF LAMP POLES, SELLERS & GENERAL ORDER SUPPLIERS

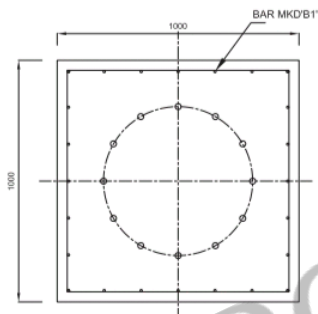
Mobil: +91 9051763430 / 9830127083
e-mail: info@vaishalipoles.com
Web: www.vaishalipoles.com

Welcome To Vaishali Poles

Sr. No.	Height of Mast (in mtr)	No. of Luminaire	Top A/F (in mm)	Bottom A/F (in mm)	No. of Section	Section Length			Section Wise Thickness			Base Plate (in mm)	PCD (in mm)	Foundation Bolt Details	Approximate Weight of Shaft with Foundation Bolt (in kg)
						Top	Middle	Bottom	Top	Middle	Bottom				
1	10	4 to 6	100	310	2	5250	x	5250	3	x	3	470 X 25	390	6 Nos X M24 X 750 mm	
2	12	6 to 8	150	360	2	6250	x	6500	3	x	3	520 X 25	445	6 Nos X M24 X 750 mm	500 to 550
3	12.5	4 to 6	150	300	2	6500	x	6500	3	x	3	520 X 25	445	6 Nos X M24 X 750 mm	500 to 550
	12.5	6 to 8	150	360	2	6500	x	6500	3	x	3	520 X 25	445	6 Nos X M24 X 750 mm	500 to 550
4	16	6 to 8	150	360	2	8300	x	8300	3	x	3	540 X 25	445	8 Nos X M30 X 850 mm	650 to 750
	16	9 to 12	150	410	2	8300	x	8300	3	x	3	570 X 30	490	8 Nos X M30 X 850 mm	650 to 750
	16	12 to 16	150	460	2	8300	x	8300	3	x	4	670 X 30	590	8 Nos X M30 X 850 mm	800 to 950
5	20	6 to 9	150	360	2	10300	x	10300	3	x	4	540 X 30	460	8 Nos X M30 X 850 mm	800 to 950
	20	9 to 12	150	410	2	10300	x	10300	3	x	4	570 X 30	490	8 Nos X M30 X 850 mm	800 to 950
	20	12 to 16	150	460	2	10300	x	10300	3	x	4	670 X 30	590	8 Nos X M30 X 850 mm	800 to 950
6	25	9 to 12	150	460	2	8750	8750	10300	3	4	4	670 X 30	590	12 Nos X M30 X 850 mm	800 to 950
	25	12 to 16	150	480	3	8800	8800	8800	3	4	5	690 X 30	590	12 Nos X M30 X 850 mm	1200 to 2000
	25	16 to 20	150	540	3	8800	8800	8800	4	4	5	730 X 30	650	12 Nos X M30 X 850 mm	1200 to 2000
7	30	9 to 12	150	540	3	10500	10500	10500	3	4	5	740 X 32	650	12 Nos X M30 X 850 mm	1200 to 2000
	30	12 to 16	150	600	3	10500	10500	10500	4	4	5	840 X 36	740	12 Nos X M30 X 850 mm	1200 to 2000
	30	16 to 20	150	610	3	10500	10500	10500	4	5	6	840 X 36	740	16 Nos X M30 X 850 mm	1200 to 2000



ELEVATION

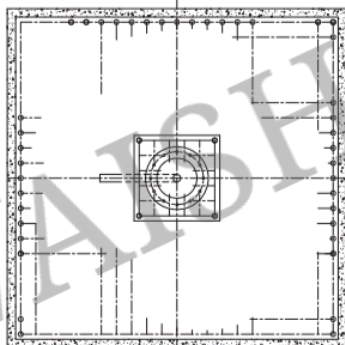


PEDESTAL DETAIL

FOUNDATION LOADING AT THE BASE OF MAST		
WIND SPEED	M/SEC	39
BENDING MOMENT	KN-Mtr	175.09
HORIZONTAL SHEAR	KN	9.6
VERTICAL LOAD	KN	20.23
S.B.C OF SOIL	Tons (Metric)/Sq.Mtr	10

SCHEDULE OF REINFORCEMENT

MKD	DIA	SHAPE	NOS	LENGTH
B1	Ø 16		20	3250
B2	Ø 12		40	3400
B3	Ø 8		15	3700
B4	Ø 8		80	3400



FOUNDATION PLAN

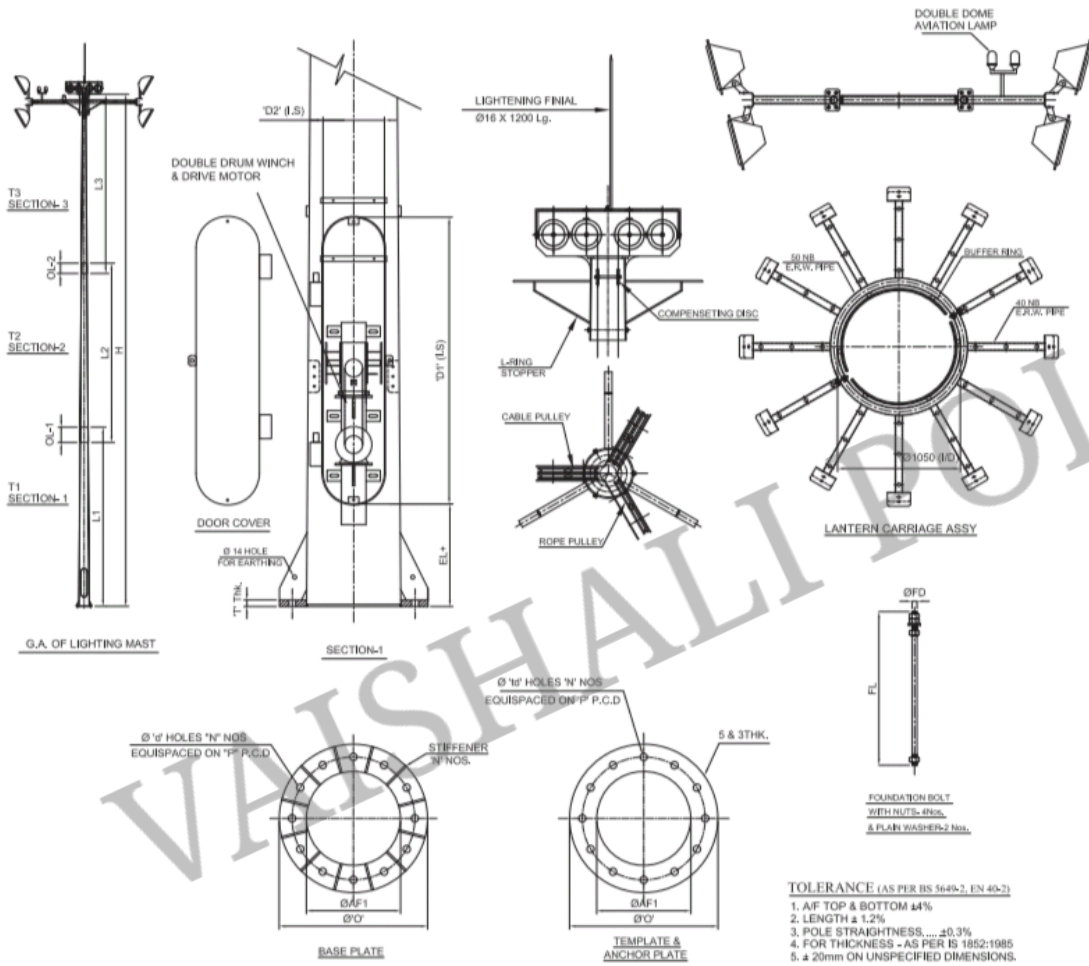
SCHEDULE OF QUANTITIES		
EXCAVATION	28.314	M ³
P.C.C	0.961	M ³
R.C.C	6.9	M ³
* STEEL Fe 500	360	Kg

* STEEL WT. FOR CHAIRS NOT INCLUDED.

Note:

1. CONCRETE GR. M25
2. CLEAR COVER 50MM
3. PROVIDE CHAIRS AT FOOTING.
4. REINFORCEMENT SHOWN IN DRAWING FOR ILLUSTRATION ONLY. REFER TO REINFORCEMENT TABLE FOR ACTUAL QUANTITY.

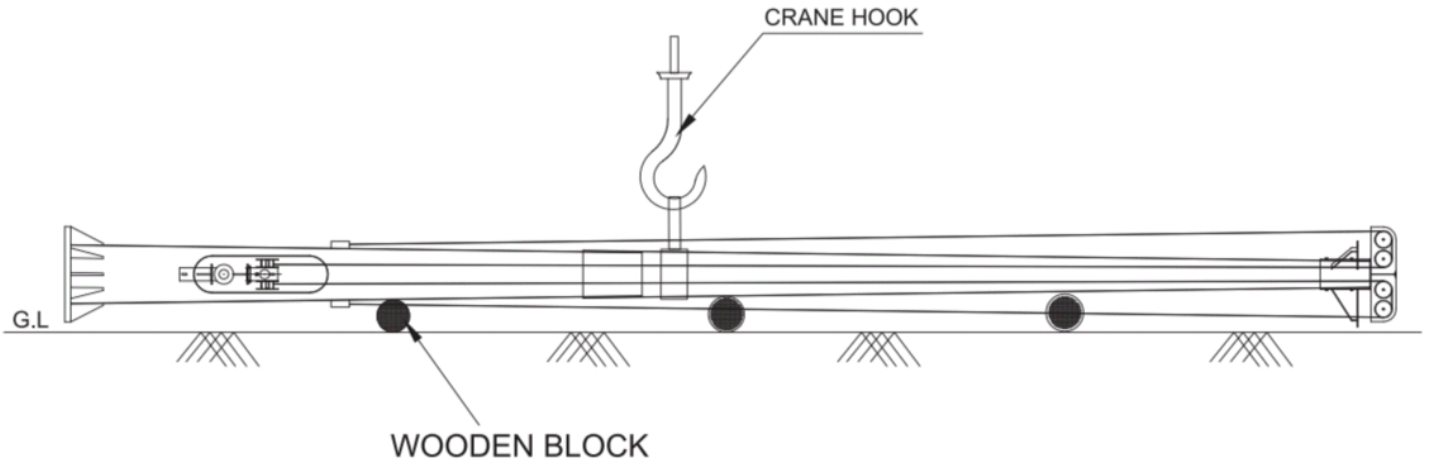
General Arrangement drawing - High Mast



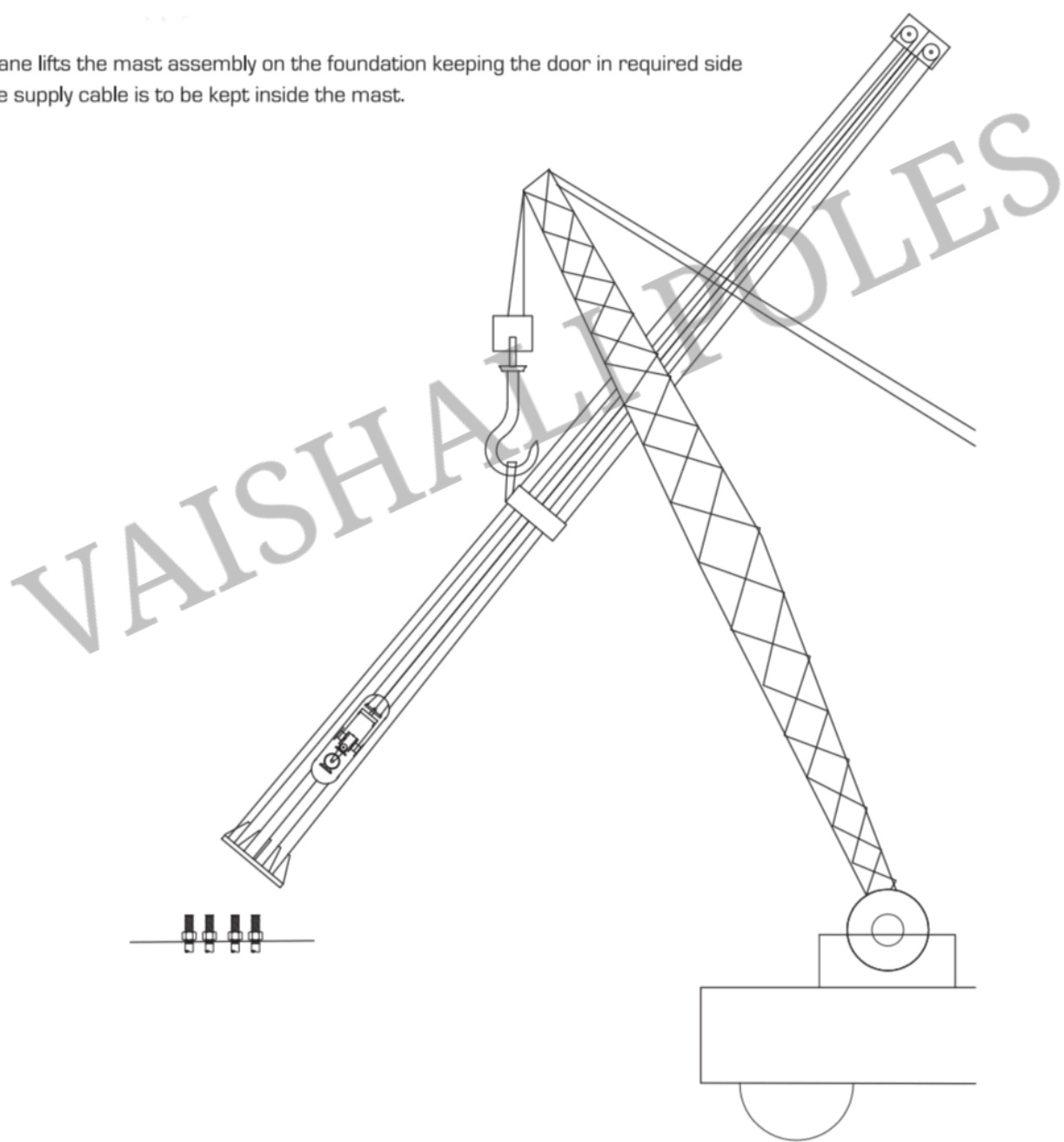
TECHNICAL DATA		
1. TOTAL HEIGHT	H	30 Mtr.
2. NO. OF SEGMENT	-	3
3. SEGMENT LENGTH	L1/L2/L3	10500 EACH
4. BOTTOM (O.A.F.)	AF1	540
5. TOP (O.A.F.)	AF2	150
6. OVERLAP	OL	850 / 650
7. SHT. THK. OF 1st SEGMENT	T1	5
8. SHT. THK. OF 2nd SEGMENT	T2	4
9. SHT. THK. OF 3rd SEGMENT	T3	4
DOOR & REINFORCEMENT		
10. DOOR HEIGHT	D1	1200
11. DOOR OPENING	D2	300
12. DOOR ELEVATION	EL	500
13. THK. OF REINFORCEMENT	DT	5
BASE PLATE & FOUNDATION		
14. OD OF BASE PLATE	O	740
15. THK. OF BASE PLATE	T	30
16. HOLE P.C.D.	P	650
17. HOLE DIA	d	Ø34
18. FDN BOLT DIA	FD	M30
19. FDN BOLT LENGTH	FL	850
20. NO. OF FDN. BOLT	N	12
21. HOLE ON TEMPLATE	td	Ø32
LANTERN RING		
22. NO OF SUSPENSIONS	-	3
23. NO OF ARMS	-	12 (Fused)
24. NO OF LUMNAIRES	-	24 (350W LED)
HEAD FRAME		
25. NO OF ROPE PULLEY	-	6
26. NO OF CABLE PULLEY	-	4

- NOTE**
- SECTION IS 20 SIDED REGULAR POLYGON.
 - CONSTRUCTION OF MAST SHAFT WITH ONE / TWO LONGITUDINAL BUTT JOINT.
 - MATERIAL**
 - FOR MAST SECTIONS - HOT ROLLED M.S. PL. EQUIVALENT TO BS EN 10025 : 2004, Gr. S355JO / IS 2062 : 2011, Gr.-E350 BR
 - FOR BASE PL. & FDN. BOLT- AS PER IS 2062 : 2011, Gr E250 A
 - METAL PROTECTION:** HOT DIP GALVANIZED AS PER IS 4759 : 1996 / IS 2629 : 1985
 - WELDING PENETRATION : 60% MIN.
 - ALL DIMENSIONS ARE IN mm.

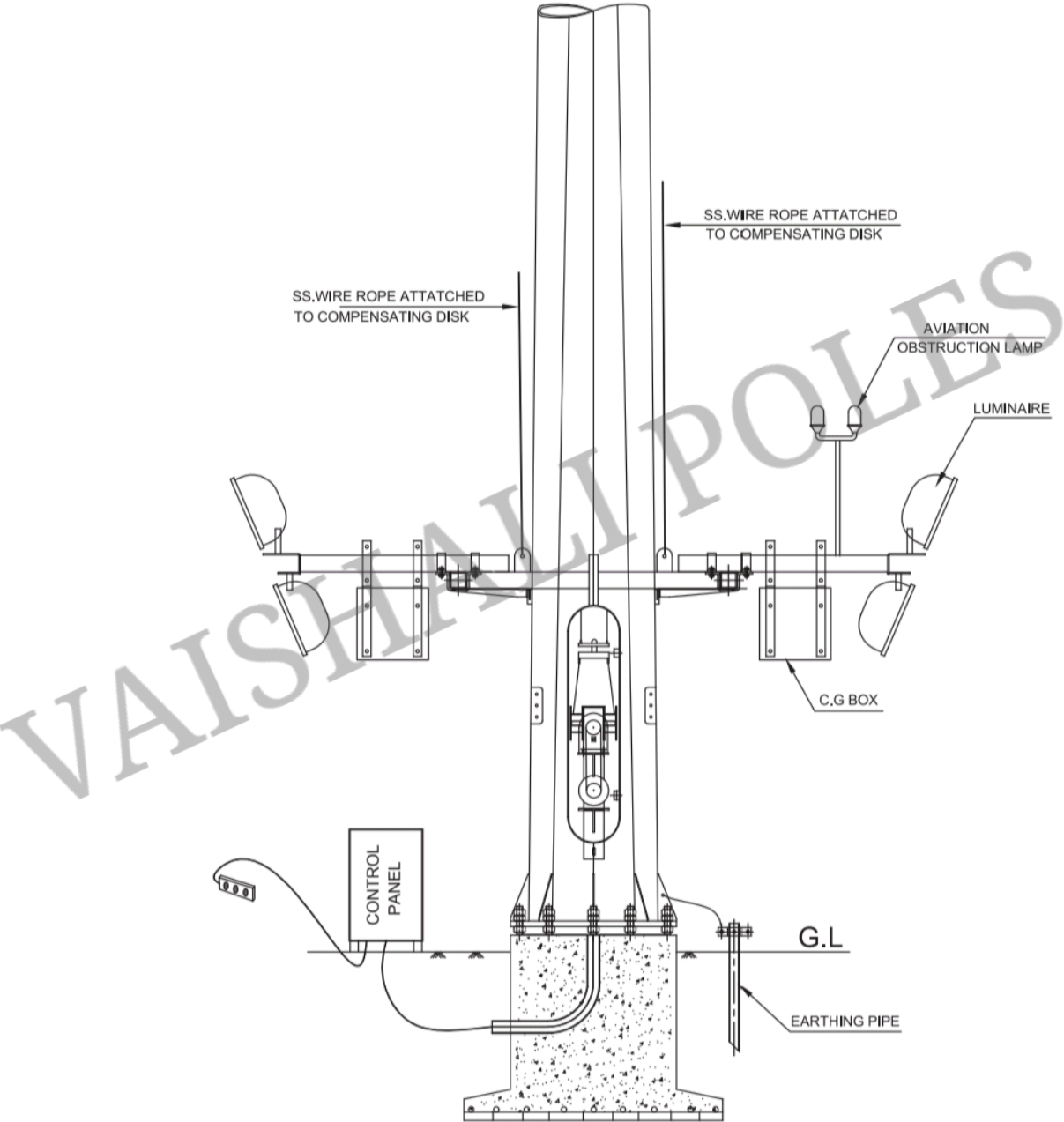
General Arrangement drawing - High Mast



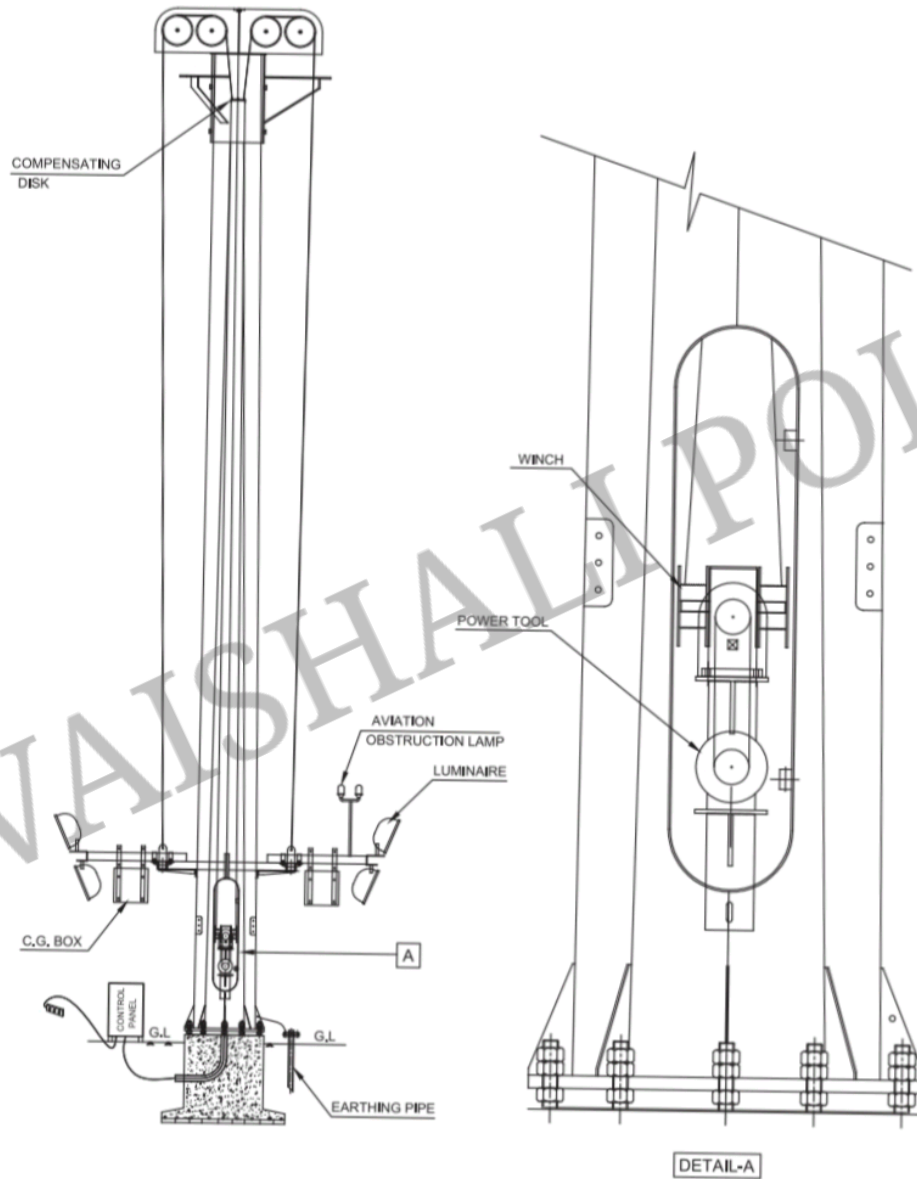
The crane lifts the mast assembly on the foundation keeping the door in required side and the supply cable is to be kept inside the mast.

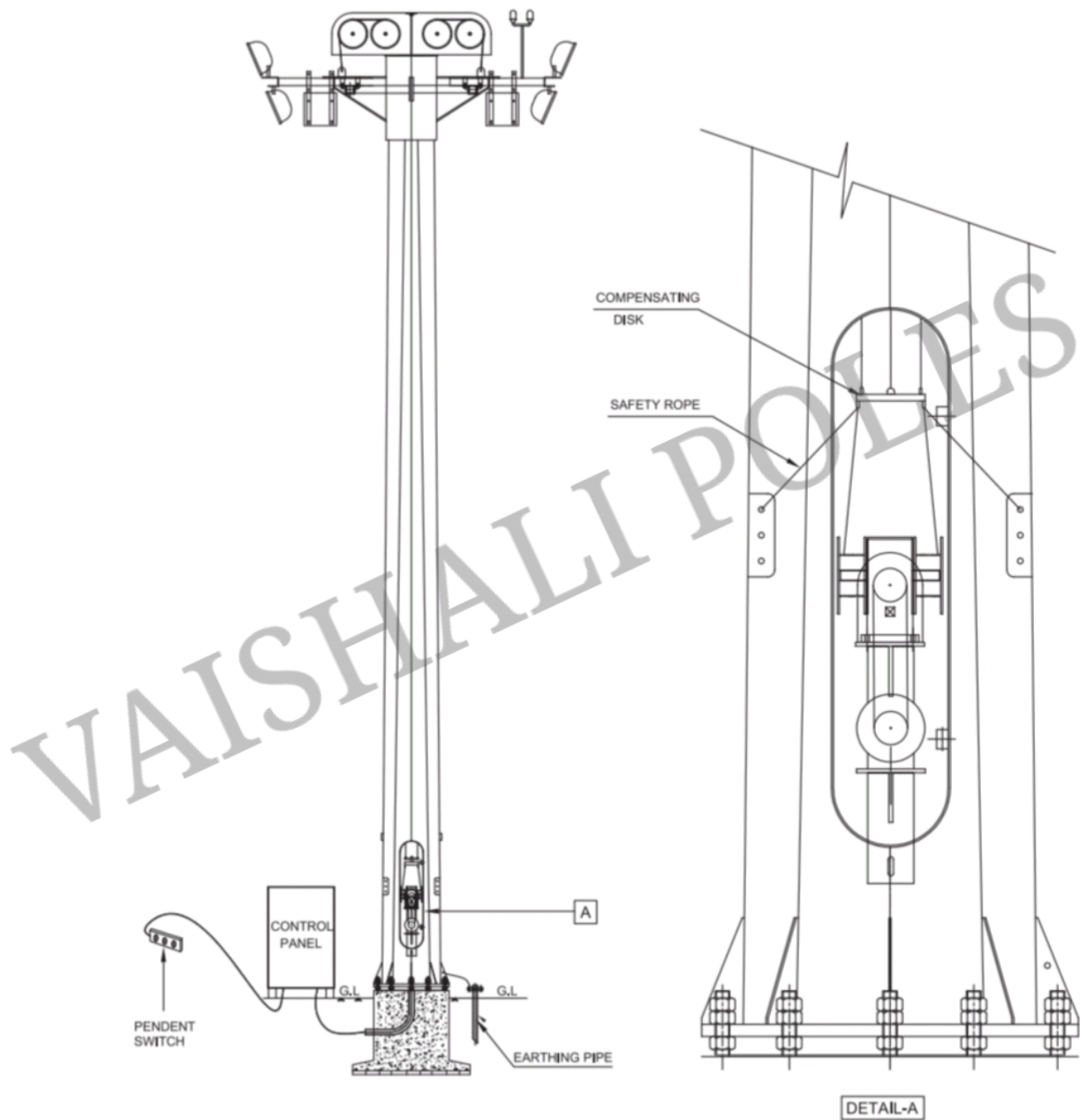


The two halves of the lantern carriage are fitted with luminaires, CG box, junction box and wiring is completed.

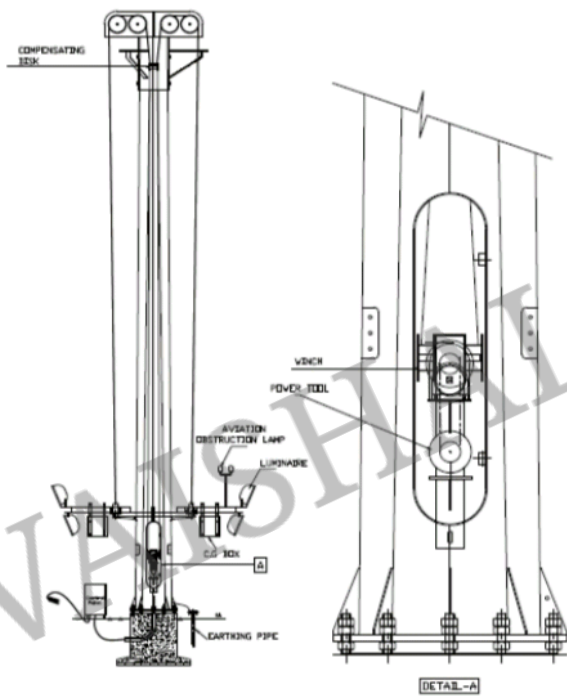


Operate the pendant switch to lift the lantern carriage.

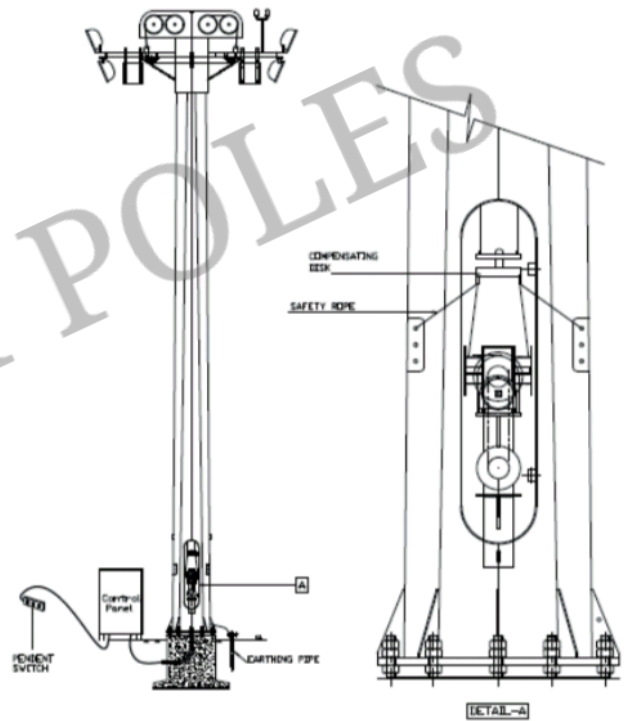




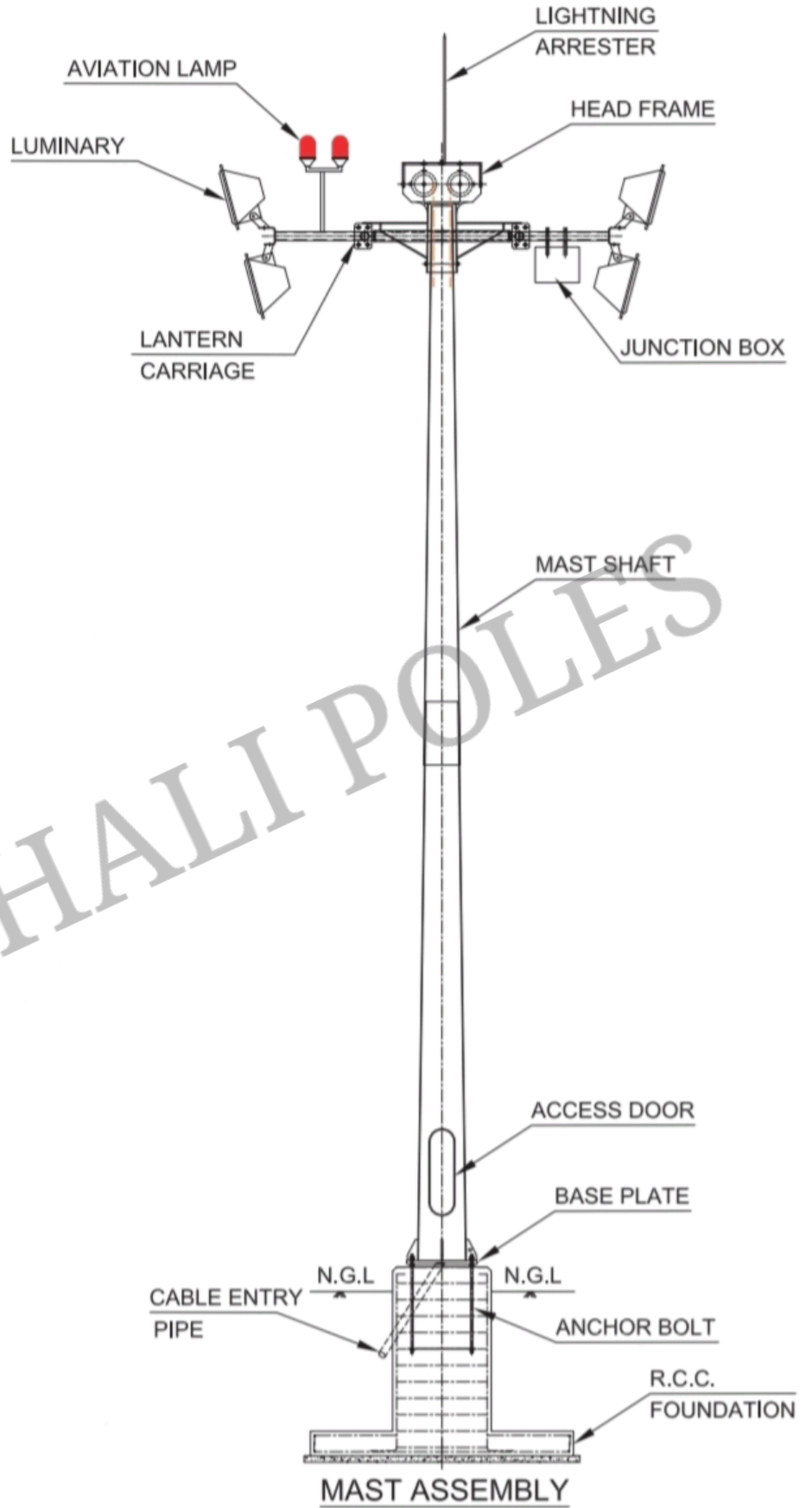
Operate the pendant switch to lift the Lantern.



Rising of Lantern Ring



Fitting the Safety Rope



VAISHALI POLES



237P/1A, Maniktala Main Rd

[View larger map](#)



Contact Us

1ST UNIT & OFFICE -237P/1A, SATIN SEN SARANI
BAGMARI KOLKATA -700054.

2ND UNIT -GANEX COMPLEX MULLICBAGAN, AMTA
RANIHATI ROAD HOWRAH -711322.

info@vaishalipoles.com

+91 9051763430 / +91 9330127083 / +91 6290583038

www.vaishalipoles.com